

Quick Start Guide

Press power switch to switch on microscope. Wait 20 seconds until blue light flashes. Hinge the mast up.

iPhone and iPad:

1. Download and install the ioLight app from the App Store
2. Connect iPhone / iPad to ioLightxxxxxx WiFi network
3. Start the ioLight app

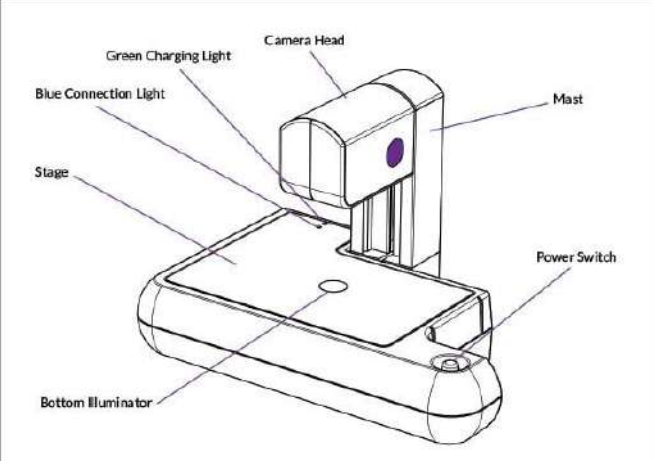
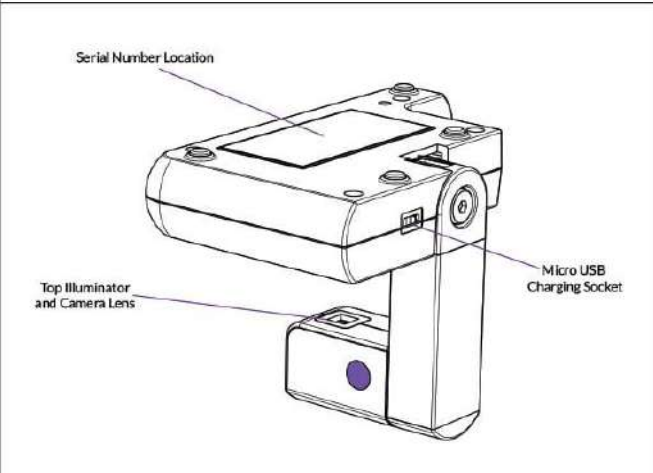
Android:

1. Download and install the ioLight app from the Play Store
2. Start ioLight app & follow the on-screen instructions to connect to the microscope's WiFi network
3. Your device may tell you that there is no internet available on the iolightxxxxxx network, if it does, choose 'Stay connected to this network'
4. Wait a few seconds for live image from the microscope

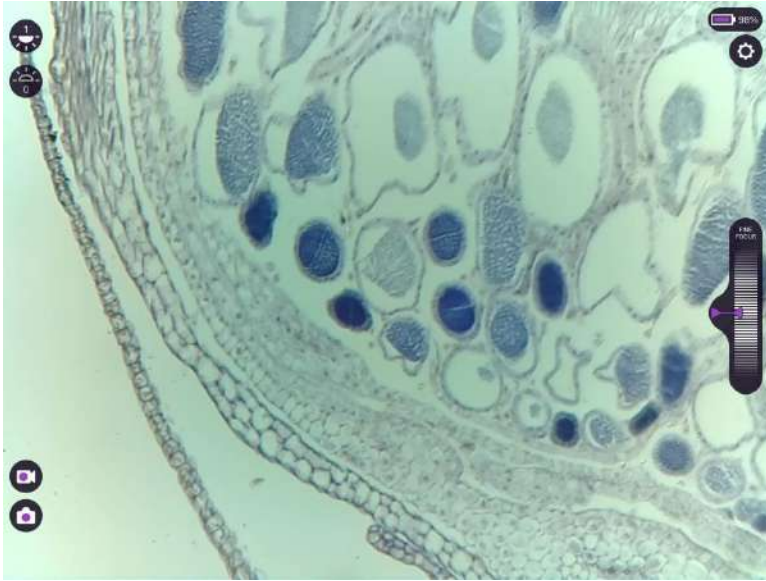
Web Browser:

1. Connect your device's WiFi to the iolightxxxxxx WiFi network
2. Open a web browser and type the address 192.168.1.1 into the URL bar

- Switch on top and / or bottom illuminators using the onscreen controls
- Place sample on stage above the base illuminator
- Slide head down to focus the image:
 - a. **1mm microscope:** the head needs to be 1mm above the sample
 - b. **2mm microscope:** the head needs to be 2.5mm above the sample
- Adjust fine focus using 'thumb wheel' on screen
- Save a high quality image by pressing the camera icon on screen – the images are saved to your photos app or in your web browser's downloads directory
- Switch microscope off - press and release the power button on microscope. NOTE: it takes 10 sec for the microscope to switch off and the blue light to go out

	Blue connection light	Continuously lit	Microscope is starting up or shutting down. Or microscope is streaming live images to a device
		Flashing	Microscope is on and ready to stream live images to a device
		Flashing long-short-long	Microscope battery is <20%
		Flashing fast	Microscope is in recovery mode (see trouble shooting)
	Green Charging light	On	USB charger is connected and battery is charging
		Off	Battery has finished charging or no USB charger is connected
	Power Switch	Switch on	A short press switches the microscope on. <i>Note: after pressing the power switch it takes approx. 20sec for the blue light to start flashing which signifies that the microscope is now on and ready to use.</i>
		Switch off	A short press switches the microscope off. <i>Note: switch off takes approx. 10secs then the blue light goes out</i> Press power switch hard and hold it for 5 seconds to reset the microscope (blue light goes out). Only do this if the microscope is not responding.

Apps (Android and iOS)



Illumination from above sample



Illumination from below sample



Save image



Record video



Settings menu (scale grid & power off)

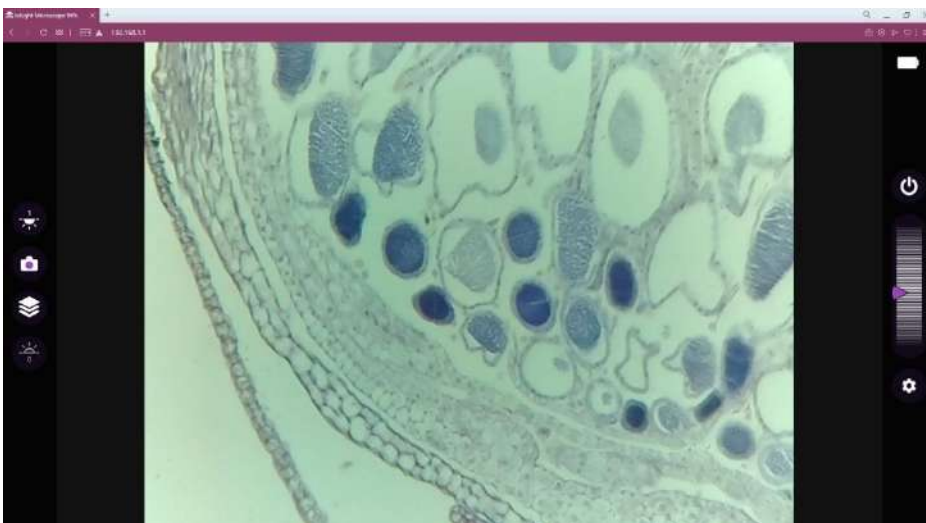
Fine focus. Tap the white triangle on the left hand side of the fine focus thumb-wheel to centre focus



Microscope battery charge level (*not on iOS lower than 12.4*)

Pinch on image - zoom (*iOS 12.5 and above*)

Web Browser



Web browser only:



Microscope power off



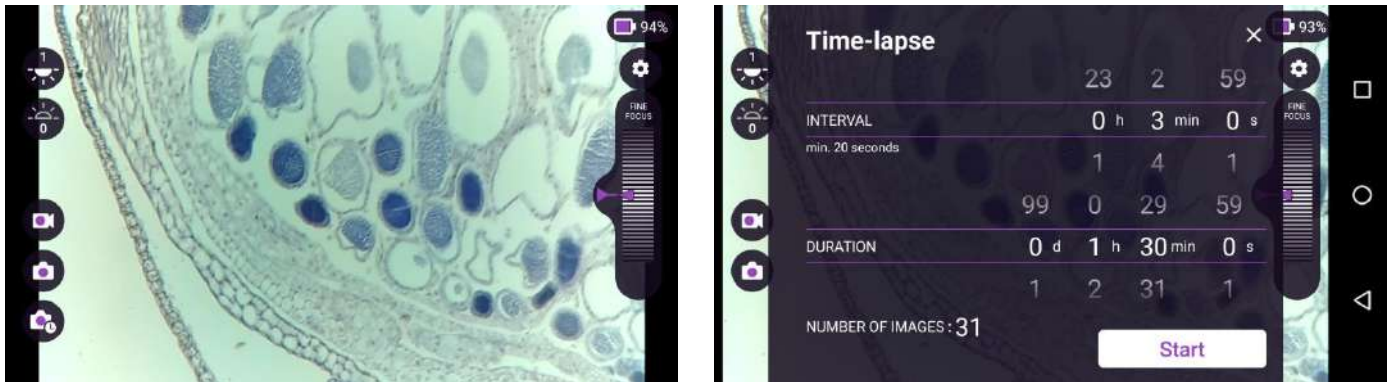
Save 12 images for Z-Stack

Pinch, or mouse thumb wheel to zoom

For full user guide go to <https://iolight.co.uk/user-guide/>

Android – additional features

Time-lapse imaging



Tap the icon in the bottom left hand corner of the screen to set-up and run time-lapse imaging

Time-lapse imaging can run for a very long time so it is recommended that you:

- Connect your microscope and Android device to their chargers
- Ensure that there is sufficient storage space on your Android device for the images (approx. 1Mb per image)
- Leave the ioLight app visible for the duration of time-lapse

Scale Grid



Tap the settings menu icon (gear icon) to reveal the settings menu. Switch the Screen Grid on and the settings for the grid appear.

There are 4 pre-set settings – 1mm, 2mm, Fluorescence and Inverted which set the grid for the corresponding ioLight microscope. 1 square for the grid represents approx. 0.1mm on the object. You can set a custom grid size either by dragging the slider, or tapping on the number. The number is the number of grid squares across the width of the image.